



## Towards the digital content in Czech museums and galleries

Differences among Czech memory institutions are abysmal - from municipal museums with only one person maintaining the whole organisation to large institutions with numerous staff and large collections. New situation had been established after changes in administrative division of country. Many troubles come along the heterogenity of authorities governing museums (Ministry of Culture, regional or municipal authorities, NGO's...).

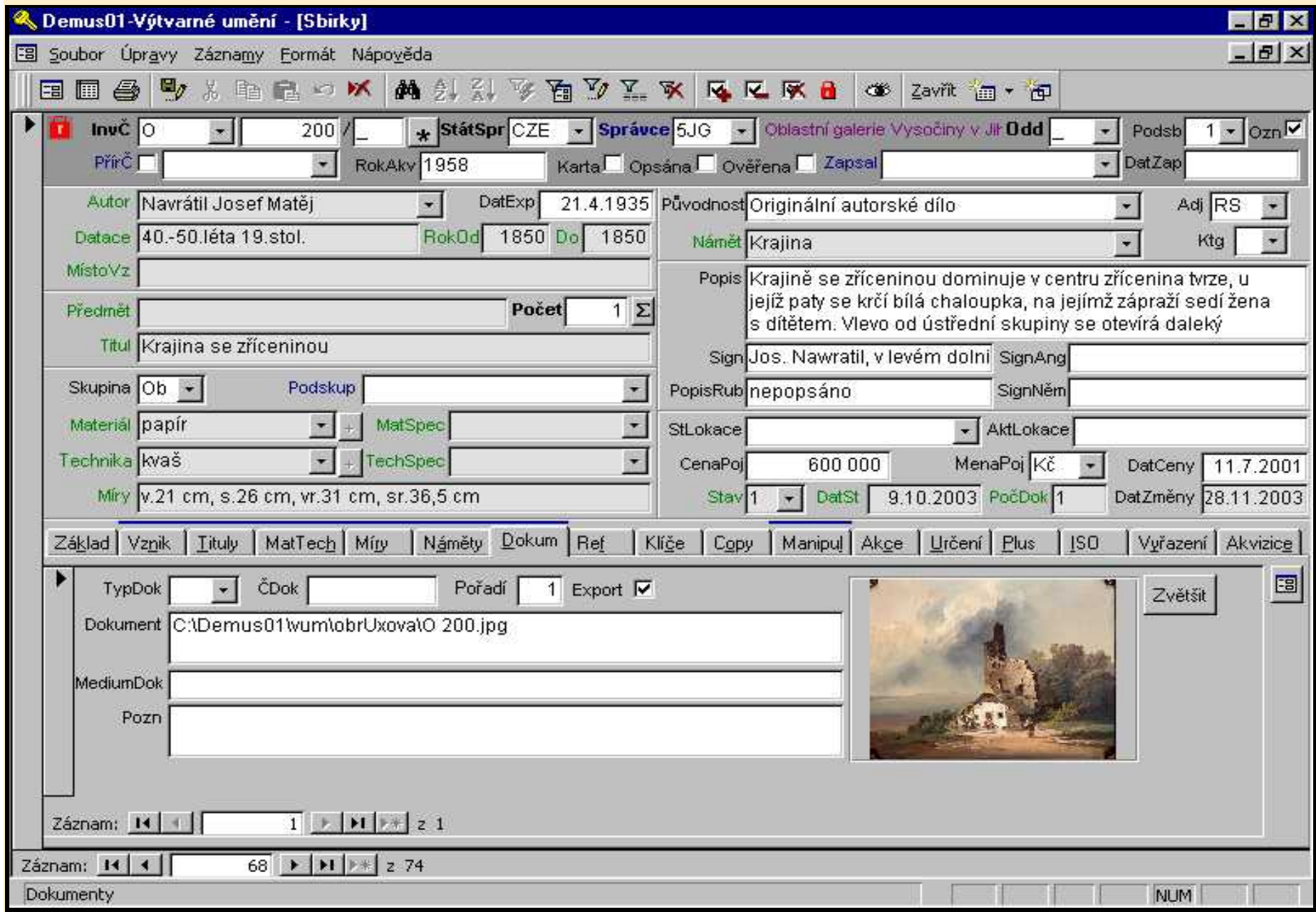
Most highlighted problems:

1. Many standards and pseudo-standards with different suitability
2. Low interoperability and compatibility of commonly used systems for documentation & workflow management
3. Agressive marketing policy of existing commercial solutions suppliers
4. Lack of information for qualified strategic planning and decision making on the institutional management level

**Metodické centrum pro informační technologie v muzejnictví (CITeM) / Methodical centre for Information Technologies in Museology**

Established as a methodic body for IT-problematics in Czech museums and galleries, working in Moravian museum in Brno. Our work is focussed onto:

- Methodology of IT utilization in museums
- National standards for collection databases
- Transformation of already existing datasets
- Software development, user support
- Cooperation and negotiation with commercial HW & SW partners



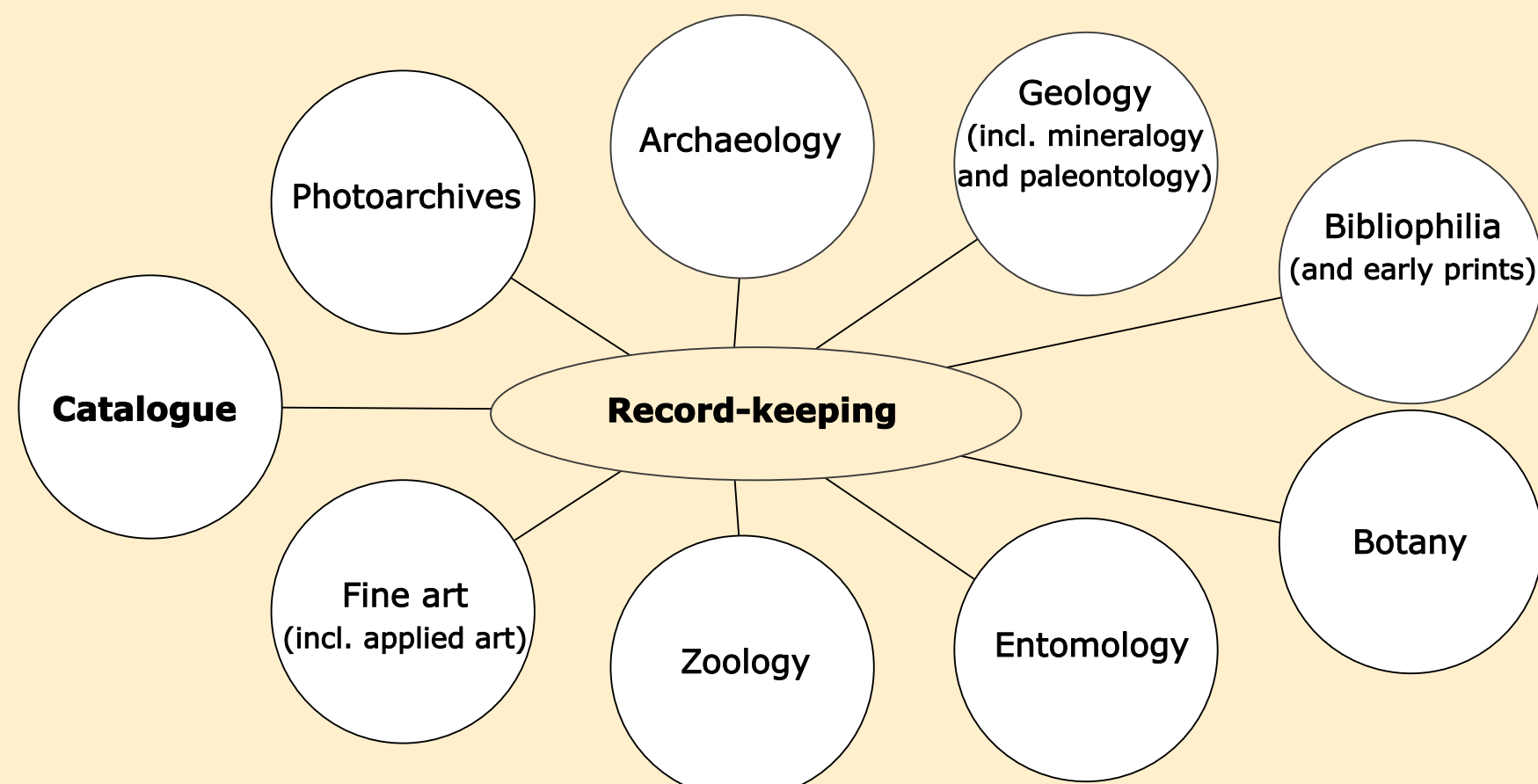
## DEMUS (Dokumentace a evidence muzejních sbírek / Documentation of Museum Collections)

One of the most widespread collection management system in Czech museums and galleries, “flag project” of CITeM by now. Demus offers a higher quality alternative to traditional catalogue cards and accession book. Demus is destined to the management of loans, exhibitions, publications, conservation records and other museum specific problems. The text description of objects may be complemented by images, sounds, videosequences etc. Shape and behavior of the basic screen form may be changed by the user according to his/her specific needs. Various print reports are built in, others may be created or easily modified by the user. Demus contains a detailed help and is accompanied by number of guiding texts.

Demus is developed by CITeM with a financial support from the Czech Ministry of Culture and in correspondence with the recommendations of CIDOC / ICOM. The data structure is in full coincidence with the international standard Object ID. Further, data import and export in all common database formats is possible. We offer data conversions from other documentation systems too. Whole application is based on MS Access and it exists in three versions. Totally new one on the client-server concept is planned for next year. **Any cooperation proposals and/or framework tips are welcome!**

Demus offers many of the vocabularies depending on respective branches (taxonomical system in botany and zoology, stratigraphy and abbreviations of minerals, techniques and materials for fine art, object types and classes for archaeology, and many others). Some of the vocabularies are fixed, the others are created or modified by the user according to his/her individual needs.

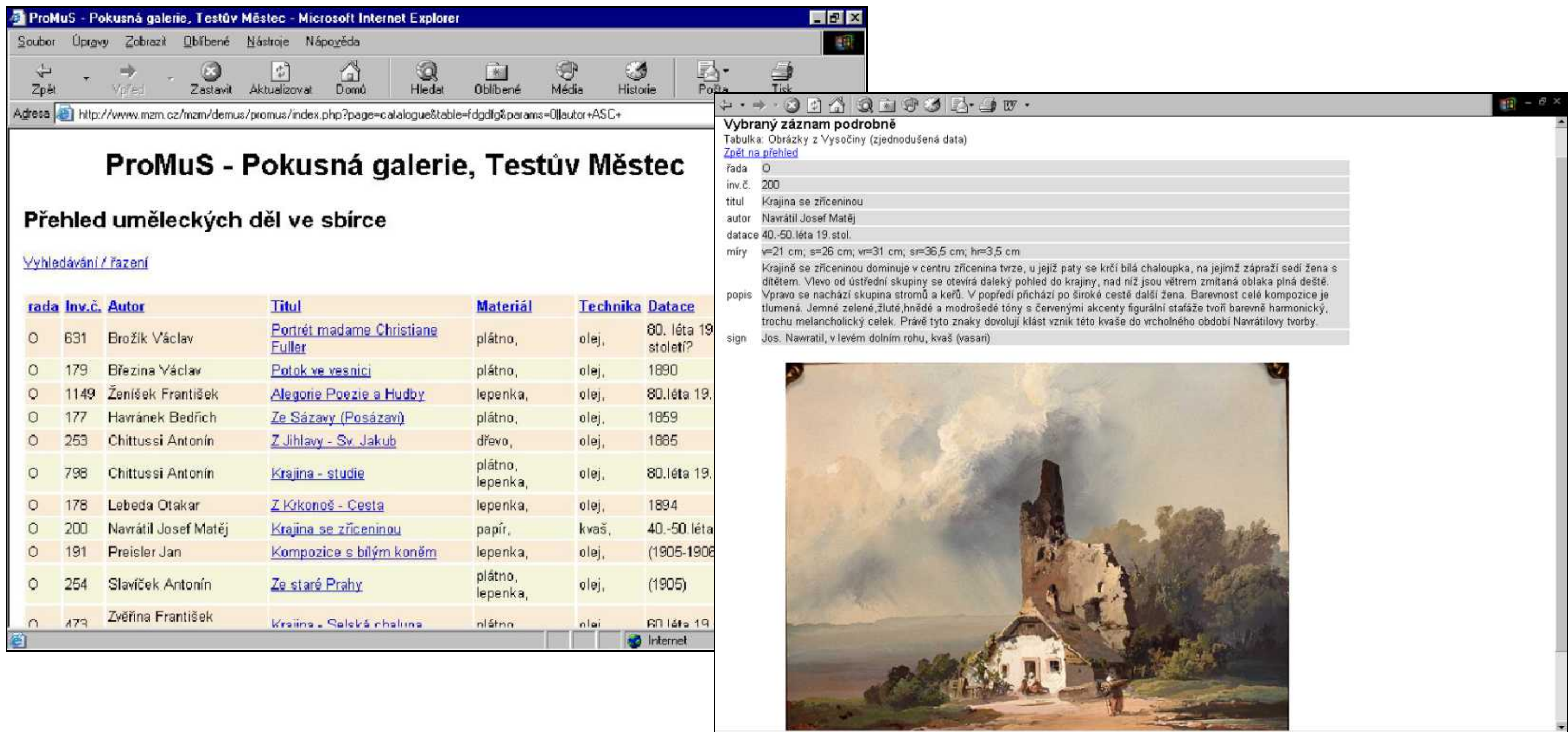
Demus is developed subsequently in form of independent modules for basic museum branches.



## ProMuS (Prohlížeč muzejních sbírek / Museum Collections Viewer)

A tool (set of PHP scripts) for the presentation of data stored in form of database tables. Nearly any Internet browser can then be used for their viewing. Data may be exhibited and browsed both in an isolated computer and in the local net or (most often) on the Internet. Direct connection with online viewable pictures is approved. ProMuS has been created for museums and galleries but it is conceived universally enough, so that it is not limited on tables of the given structure, data from given databases, mere museum collections, but it enables to exhibit nearly any data stored in table form. ProMuS is uncomplicated, easy to modify, but safe as much as possible. The only „problem“ can be its installation, as it is to be done by the administrator of the WWW server.

ProMuS requires a WWW server supporting PHP3 (or above versions) and MySQL or PostgreSQL for storing the data.



## CES (Centrální evidence sbírek / Central Registry of Collections)

Framework for ministerial registration of all meaningful collections of museum nature in Czech Republic according to Collection Act 122/2000. Software equipment made in CITeM, data fulfillment provided on the basis of obligatory actualisation from collection holders.

## CESik (“small CES”)

Small, MS Access-based frontend for preparation of collection datasets in individual museums and their export to CES.

Connection with object databases is still lacking in both applications - only collection descriptions and catalogue numbers of respective objects are stored. Data exchange is based on traditional floppy disc transport between individual collection holders and Ministry of Culture.

